



ANNUAL  
REPORT : 2021

# Overview

**What a year it's been for Inclusion Solutions! This year, Inclusion Solutions has been fortunate enough to continue to work on some fantastic projects as well as begin working on exciting new opportunities that continue to support communities across Western Australia.**

We have continued our journey working in partnership with Manchester United, Telethon, and Football West on the United Reds project – a project that supports kids with and without disabilities and their families to represent and find a sense of belonging in their local soccer club and participate in the sport without barriers.

We have also developed a resource with Gymnastics WA containing best practice guidelines to ensure more inclusive practices across their KinderGym Program. We have worked tirelessly to create, design and redesign the iPlay Audit Tool, a digital auditing tool that assesses and provides recommendations according to Australian standards to ensure play equipment is safe, accessible, and most importantly, fun, for children of all backgrounds and abilities.



And it hasn't just been about kids this year either! We have continued to establish a strong presence in the communities of Kalamunda and Mandurah, connecting older adults, retirees, and folks exploring the next phase of their lives with opportunities to gift their time and talent to clubs and community groups looking for passionate and skilled volunteers.

Additionally, the COVID-19 Relief Fund gave us the opportunity to further support the community in Kalamunda, working alongside six community clubs as they took steps to create lasting positive change on their social inclusion journeys. Through this fund, Inclusion Solutions was able to deliver a flagship event for non-for-profit organisations and local businesses to provide practical tips and advice to ensure we are all working towards creating inclusive and welcoming environments for all people, no matter who they are or what they do.

This year, the Socially Inclusive Communities WA (SICWA) Project evolved into the Building Inclusive Communities WA (BICWA) Project as we reflected upon our learnings and found new, creative ways to support communities in over twenty local government areas across the state to respond to the challenges and opportunities that the pandemic presented.



In sunny Karratha, Inclusion Solutions have partnered with the City to deliver the Be Active Project, which included a range of workshops, and hands-on support to assist local community clubs to reach and engage with people from low participation backgrounds. Similarly, in the City of Wanneroo, we supported local government staff by developing a Social Inclusion Tool to ensure their events, activities and programs are socially inclusive and accessible to all people in their diverse community.

The Cricket Australia Project continues to be one of our first largest scale national projects. Inclusion Solutions has had the opportunity to support cricket State Sporting Associations to promote social inclusion by upskilling staff and supporting clubs at a grassroots level.

It's been a big year. Our team has evolved and grown more than we would have ever imagined, but we could not be more proud of the work we have achieved this year and the fantastic team we now have who have made it all happen.

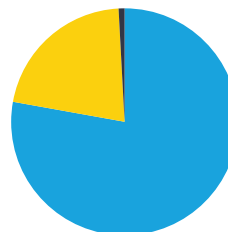


## FINANCIAL HIGHLIGHTS

### Revenue

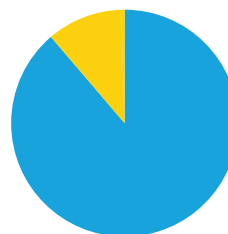
#### 2018

- Partnership 78%
- Training 21%
- Other 1%



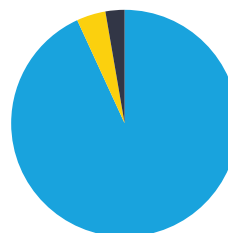
#### 2019

- Partnership 89%
- Training 11%
- Other 0%



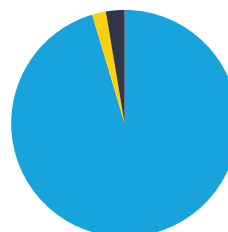
#### 2020

- Partnership 93%
- Training 4%
- Other 3%



#### 2021

- Partnership 95%
- Training 2%
- Other 3%



## ORGANISATIONAL HIGHLIGHTS

**74** WORKSHOPS  
ACROSS WESTERN AUSTRALIA



**26**



PROFESSIONAL  
DEVELOPMENT SESSIONS

**4**



SOCIAL INCLUSION  
FORUMS



**28** NATIONAL  
WEBINARS

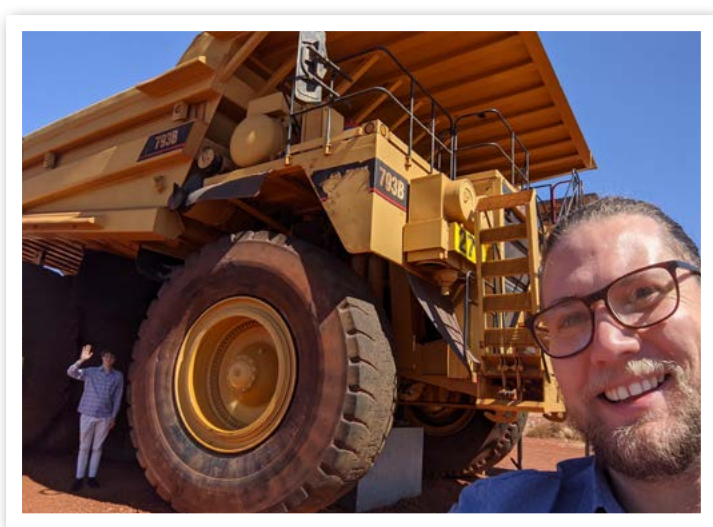
**4**

X 12 WEEK CLUB RENOVATION  
TOOLKIT COURSES





# Case Study



## RANGE VIEW PARK TENNIS CLUB

### Situation

The club identified that they didn't have any options within their programming for community members who were new to the sport of tennis, or hadn't played in some time. They saw a demand for these options and wanted to work towards a new initiative to give the community these opportunities, while attracting more members to the club.

### Solution

The club worked to create a 5-week program called "Not So Serious Tennis". This program included modified rules, to allow those with little to no experience to join with ease. They covered the basics of serving, game play and positioning on the court.

### Success

Over 30 individuals joined the program, an outstanding result considering the club could only accommodate 16 players a week. This program allowed players to form connections with one another, with many making new friends.

..... "We have pushed the message that anyone can play tennis if we welcome them and give them a chance. The committee has approved our program to include more people from the local community. We now have something to offer advanced players, regular players and beginners."

..... DARRYL DOWNING, RANGE VIEW PARK TENNIS CLUB



WE GRATEFULLY ACKNOWLEDGE THE SUPPORT GIVEN BY THESE ORGANISATIONS THROUGHOUT THE YEAR



Government of Western Australia  
Department of Communities  
Disability Services



Department of  
Local Government, Sport  
and Cultural Industries

