



ANNUAL
REPORT : 2022

Overview

It's hard to believe another year has gone by! Another year spent working on some fantastic projects, identifying new opportunities and partners and really growing and developing as a team. All the while with a strong focus on fostering vibrant and inclusive communities with all we work with.

Our WayFairer projects continued to grow this year, both in the Kalamunda and Mandurah communities. Across both projects, we've connected with more than 200 older adults, raising awareness for the project, connecting folks in their community and matching individuals with clubs, community groups or other organisations looking for volunteers to help them establish a sense of belonging in their community.



United Reds Football League members.



Inclusion Solutions team Christmas function.

Looking towards our international partnership, this year, we celebrated our third season of the United Reds Football League – a milestone we were incredibly proud of together with Manchester United Foundation, Telethon, Football West and the Football Futures Foundation. Nine local clubs were involved in the league throughout the season and we've seen some great outcomes, watching kids get involved in the sport for the first time, grow in their confidence and even progress within their local club. Of course, the highlight of the year would have to be the visit from Manchester United, where some lucky United Reds players had the opportunity to join their Manchester United heroes on the pitch after their open training session for a kick around and some penalty shoot-outs!

Our newest project, the Industry Mentors in Employment project, also gave us a great opportunity to work alongside our partner organisation Inclusion WA. We've loved hopping across the car park to chat with their team and share ideas and resources to ensure this project is truly a collaborative one. Thanks to State Government funding, the project is all about supporting people with disabilities to gain employment by fostering authentic connections with Mentors in their chosen industry. Over the course of this year, we've begun connecting participants with industry Mentors to increase their confidence, grow their network connections and gain employment in their field.

Financial Highlights

Education and capacity building is still at the core of who we are. Similar to previous years, our training and workshops have gone from strength to strength. We have revamped our content, style and delivery, and have been fortunate to present this year at a wide variety of organisations, including state sporting associations, local and state government departments, corporate organisations, as well as present at several conferences and summits.

Now in its second year, our Building Inclusive Communities Project and Social Inclusion Forums have continued to impact communities and foster inclusion at a statewide level, thanks to the support of Lotterywest. Due to the successes of these projects, partners made and outcomes delivered, Inclusion Solutions has been published in several articles and publications this year with a focus on inclusive community development.

In the sporting sector, we've continued to support a number of clubs at a local level, as well as through our partnership projects with state and federal sporting associations. From developing pathways for inclusive football, to making a splash with our new Swimming WA partnership – we are committed to finding innovative ways to support people of all ages, backgrounds and abilities to reduce barriers to participation and play the sports they love.

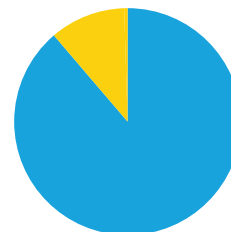


Staff and presenters at the Inclusion Solutions Forum.

Revenue

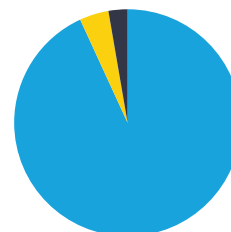
2019

- Partnership 89%
- Training 11%
- Other 0%



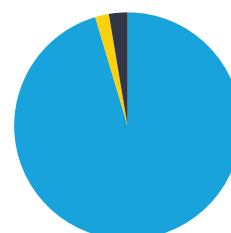
2020

- Partnership 93%
- Training 4%
- Other 3%



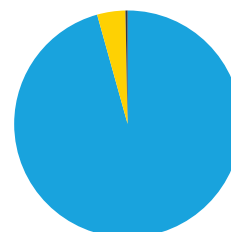
2021

- Partnership 95%
- Training 2%
- Other 3%



2022

- Partnership 96%
- Training 4%
- Other 0%



Organisational Highlights

35 WORKSHOPS
WITH **427** ATTENDEES



13 PROFESSIONAL
DEVELOPMENT SESSIONS
ATTENDED BY **65**



5 NATIONAL
WEBINARS



6 PRESENTATION/
CONFERENCES



LOCAL
GOVERNMENTS
CONNECTED WITH:



17

603 PARTICIPANTS
REACHED VIA

6 SOCIAL INCLUSION
FORUMS FEATURING



47 GUEST SPEAKERS

ONLINE COURSE
REGISTRATIONS
(CRT, CDS & CA):

124 UP **3100%**
(FROM 4 IN 2021)



Choir performance at Social Inclusion Forum.



Sharon Cooke and Karen Jetta delivering Welcome to Country at Social Inclusion Forum.

Case Study

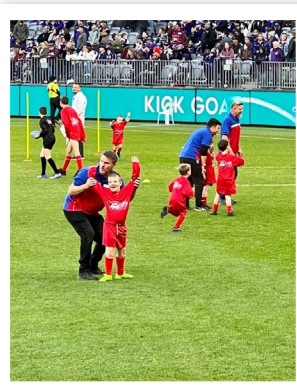
The Little Club with a Big Heart: Mount Helena Junior Football Club

Our team had the pleasure of meeting the wonderful folk at Mount Helena Junior Football Club (JFC) towards the end of last year. As a local club in a small community, they were struggling with membership and were keen to focus on inclusion to ensure they were representative of their community.

Through our mentoring process, our team worked alongside the Mount Helena JFC committee, to get to know their club and support them to thrive as a strong and inclusive club in the community. Through regular communication, sharing of ideas, resources and advice over the past few months the club is now kicking goals – literally.

Here are some of the fantastic things they've achieved over the last few months:

- * The launch of an inclusive football program for children with disability
- * 1 in 4 of their junior program members are now children with a disability
- * An improved relationship with their Local Government and other groups in the area
- * A doubling of club membership (families are travelling to be a part of the club!)
- * An increase in volunteerism by 300%
- * An increase in sponsorship and grants by 300%
- * Recipient of the WA Football Participation Certificate of Excellence Award
- * Mount Helena JFC Club President took out their districts Volunteer of the Year award
- * Plus, they were invited to participate in the AFL Purple Hands Foundation Optus Stadium Half Time game.



Mount Helena Junior Football Club.

We gratefully acknowledge the support given by these organisations throughout the year:

